

State of Wyoming Corner Record

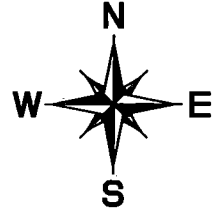
(In compliance with the **CORNER PERPETUATION AND FILING ACT**, Wyoming Statutes, 1997 Section 33-29-140 et. seq., and the Rules and Regulations of the Board of Professional Engineers and Professional Land Surveyors)

Record of original survey and citation of source of historical information (if corner is lost or obliterated). Description of corner monumentation evidence found and/or monument and accessories established to perpetuate the location of this corner. Sketch of relative location of monument, accessories, and reference points with course and distance to adjacent corner(s) (if determined in this survey).

Original Record: (J.W. Hammond - 1872) Set a sandstone 22 x 12 x 3 for corner to sections 16, 17, 20 & 21.

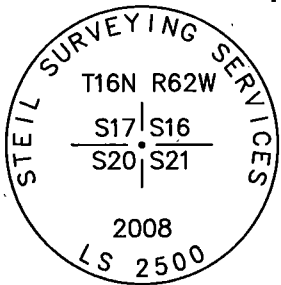
Evidence Found: Found 3 1/4" aluminum cap marked as shown below. Cap projects 4" above ground, as a small 1' diameter collar of stone, and situated as shown below. Accepted monument as corner location.

Perpetuation: No further monumentation.

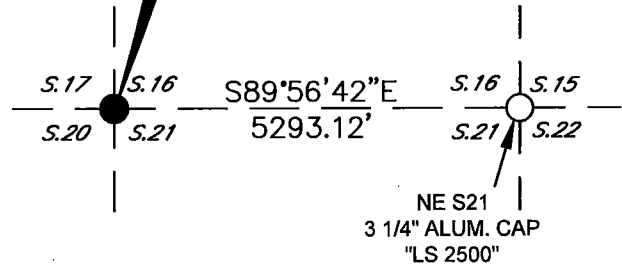


THIS CORNER
3 1/4" ALUM. CAP

Monument Inscription



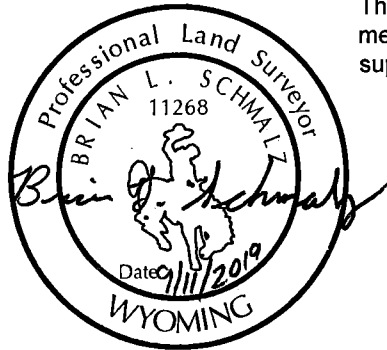
3 1/4 INCH DIAMETER
ALUMINUM CAP



Date of Field Work: 06-25-2019 Office Reference: Book 48 Pg 15

Cross Index Plat

	1	2	3	4	5	6	7	8	9	10	11	12	13	14	15	16	17	18	19	20	21	22	23	24	25	
A																										
B																										
C																										
D																										
E																										
F																										
G																										
H																										
I																										
J																										
K																										
L																										
M																										
N																										
O																										
P																										
Q																										
R																										
S																										
T																										
U																										
V																										
W																										
X																										
Y																										
Z																										
	1	2	3	4	5	6	7	8	9	10	11	12	13	14	15	16	17	18	19	20	21	22	23	24	25	



BRIAN L. SCHMALZ
PLS 11268

This corner record was prepared by me or under my direction and supervision.

PO BOX 502 | 135 PINE STREET
BUFFALO, WY 82834 | 307.684.1200



Altitude Land Consulting, P.C.
ENGINEERING | SURVEYING | CONSULTING



RECP #: 761632
RECORDED 9/16/2019 AT 2:10 PM BK# 2638 PG# 689
Debra K. Lee, CLERK OF LARAMIE COUNTY, WY PAGE 1 OF 1

Corner Name SW Sections 16, T 16 N, R 62 W, 6th P.M. County.: LARAMIE Cross-Index No.: N-9